

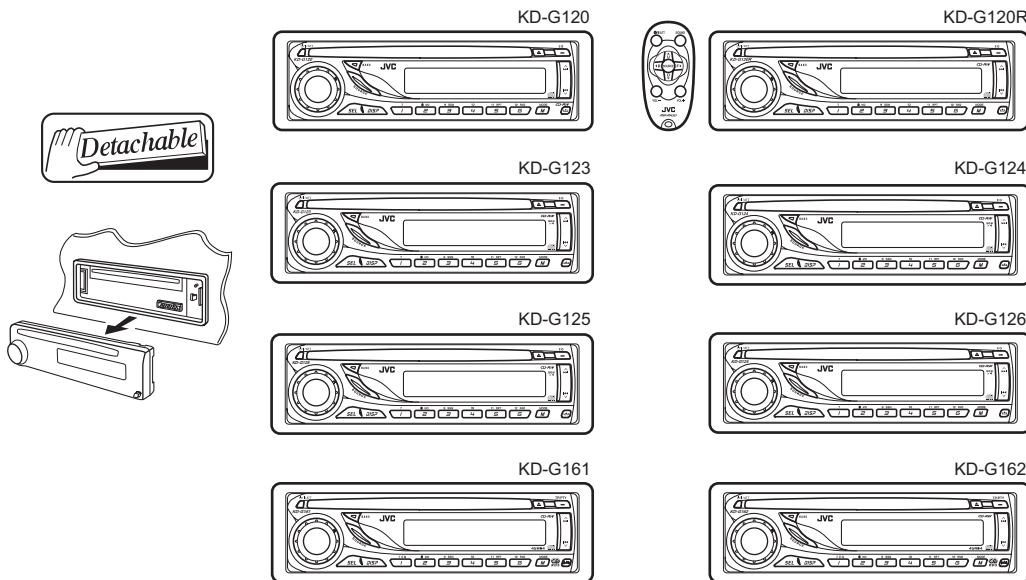
JVC

SCHEMATIC DIAGRAMS

CD RECEIVER

KD-G120, KD-G120R, KD-G123 KD-G124, KD-G125, KD-G126 KD-G161, KD-G162

CD-ROM No.SML200512



KD-G120, KD-G120R
Area suffix
J ----- Northern America
KD-G123, KD-G124
Area suffix
UI ----- India
KD-G125, KD-G126
Area suffix
UT ----- Taiwan
UH ----- Thailand
UN ----- Indonesia
U ----- Other Areas
KD-G161, KD-G162
Area suffix
E ----- Southern Europe
EX ----- Northern Europe
EY ----- Eastern Europe
EU ----- Turkey




Lead free solder used in the board (material : Sn-Ag-Cu, melting point : 219 Centigrade)

Contents

Block diagram (For KD-G120, KD-G120R, KD-G123, KD-G124, KD-G125 and KD-G126)	2-1
Standard schematic diagrams (For KD-G120, KD-G120R, KD-G123, KD-G124, KD-G125 and KD-G126) ..	2-2
Block diagram (For KD-G161 and KD-G162)	2-5
Standard schematic diagrams (For KD-G161 and KD-G162)	2-6
Printed circuit boards	2-9 to 11

Safety precaution

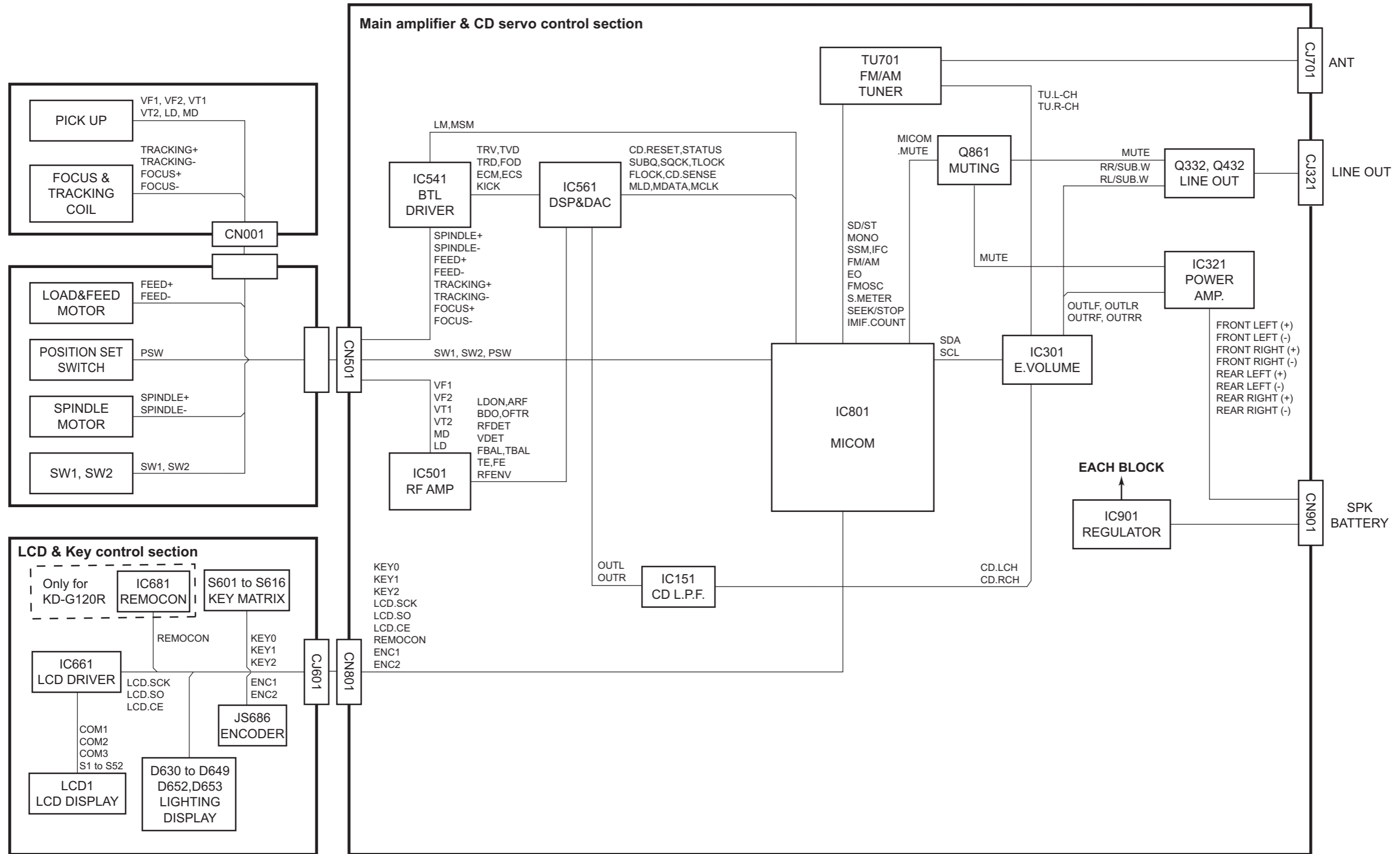
 **CAUTION** Burrs formed during molding may be left over on some parts of the chassis. Therefore, pay attention to such burrs in the case of performing repair of this system.

 **CAUTION** Please use enough caution not to see the beam directly or touch it in case of an adjustment or operation check.

Difference point

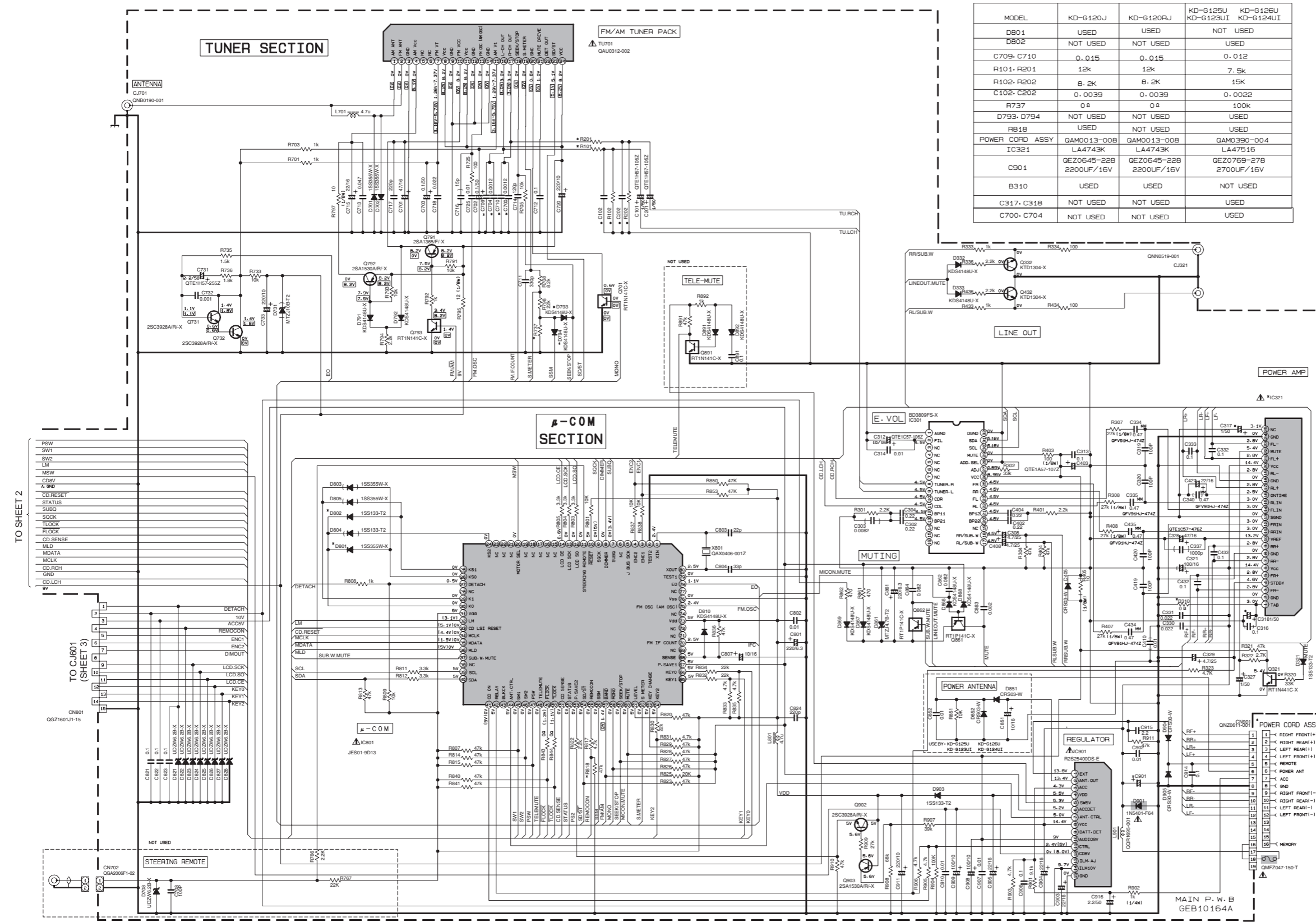
	KD-G120R	KD-G120,KD-G123,KD-G124,KD-G125,KD-G126	KD-G161,KD-G162
Remote controller	YES	NO	NO
Telephone Muting	NO	NO	YES

Block diagram (For KD-G120, KD-G120R, KD-G123, KD-G124, KD-G125 and KD-G126)



Standard schematic diagrams (For KD-G120, KD-G120R, KD-G123, KD-G124, KD-G125 and KD-G126)

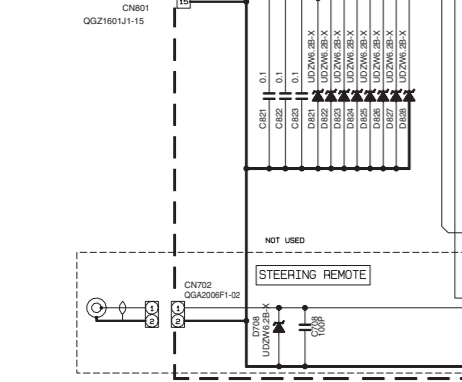
■ Main amplifier section



MODEL	KD-G120J	KD-G120RJ	KD-G125U KD-G123UI	KD-G126U KD-G124UI
DB01	USED	USED	NOT USED	NOT USED
DB02	NOT USED	NOT USED	NOT USED	USED
C709-C710	0.015	0.015	0.012	
R101, R201	12k	12k	7.5k	
R102, R202	8.2k	8.2k	15k	
C102-C202	0.0039	0.0039	0.0022	
R737	0Ω	0Ω	100k	
D793-D794	NOT USED	NOT USED	USED	
R818	USED	NOT USED	USED	
POWER COPD ASSY	QAM0013-008	QAM0013-008	QAM0390-004	
IC321	LA4743K	LA4743K	LA47516	
C901	QE20645-228 2200UF/16V	QE20645-228 2200UF/16V	QE20769-278 2700UF/16V	
B310	USED	USED	NOT USED	
C317, C318	NOT USED	NOT USED	USED	
C700, C704	NOT USED	NOT USED	USED	

- TO SHEET 2
- PSW
 - SW1
 - SW2
 - LM
 - MSW
 - CDRV
 - 4-DR
 - CD RESET
 - STATUS
 - SUBQ
 - SOCK
 - TLOCK
 - FLOCK
 - CD SENSE
 - MLD
 - MDATA
 - MCLK
 - CD RCH
 - GND
 - CD LCH
 - 9V

- TO C.J601 (SHEET 3)
- 1
 - 2
 - 3
 - 4
 - 5
 - 6
 - 7
 - 8
 - 9
 - 10
 - 11
 - 12
 - 13
 - 14
 - 15



NOTES:

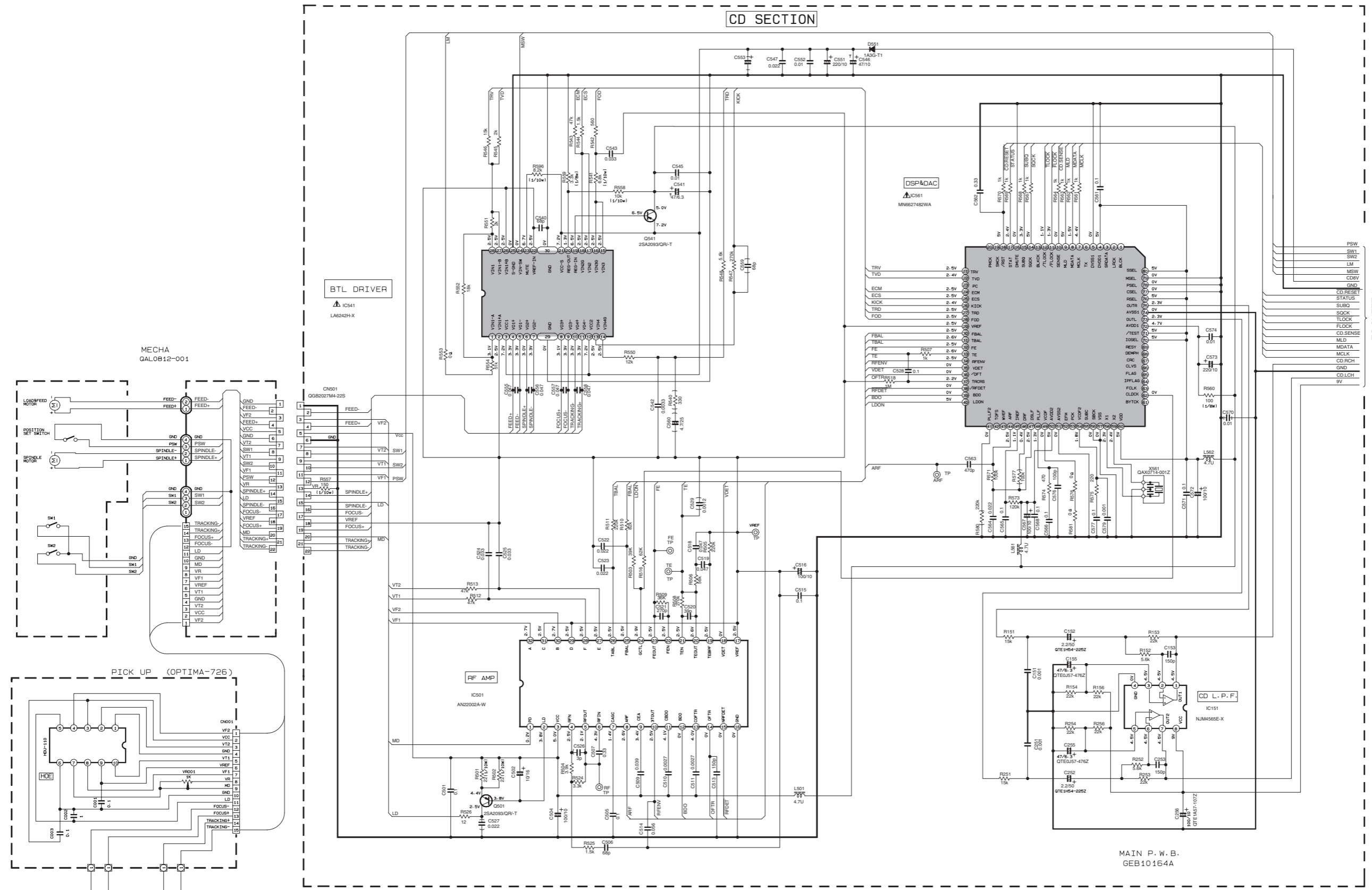
- VOLTAGE ARE DC-MEASURED WITH A DIGITAL VOLTMETER WITHOUT INPUT SIGNAL CONDITION
- UNLESS OTHERWISE SPECIFIED:

ALL RESISTOR ARE 1/16W ±5% METAL GLAZE RESISTOR.
 ALL CAPACITOR ARE 50V OR 25V CERAMIC CAPACITOR.
 ALL RESISTANCE VALUES ARE IN OHM
 ALL CAPACITANCE VALUES ARE IN μF (10³PF).
 ALL E-CAPACITORS ARE SHOWN IN THE FORM OF CAPACITANCE/(μF/RATED VOLTAGE(V))

Symbol	Part Number	Value
	RT1N141C-X	10K
	RT1N441C-X	47K
	RT1P141C-X	10K

⚠ Parts are safety assurance parts. When replacing those parts make sure to use the specified one.

CD servo control section



NOTE 1. VOLTAGE ARE DC-MEASURED WITH DIGITAL VOLTMETER WITHOUT INPUT SIGNAL CONDITION
 2. UNLESS OTHERWISE SPECIFIED.
 ALL RESISTORS ARE 1/16W±5% METAL GLAZE RESISTOR.
 ALL CAPACITORS ARE 50V OR 35V CERAMIC CAPACITOR.
 ALL RESISTANCE VALUES ARE IN OHM.
 ALL CAPACITANCE VALUES ARE IN UF(µF).
 ALL E. CAPACITORS ARE SHOWN IN THE FORM OF CAPACITANCE(UF) /RATED VOLTAGE(V)

Parts are safety assurance parts. When replacing those parts make sure to use the specified one.

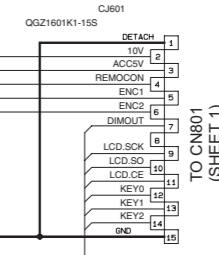
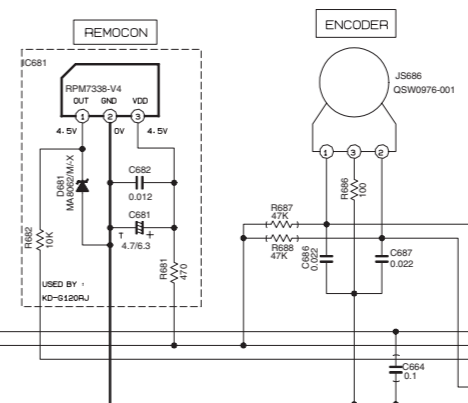
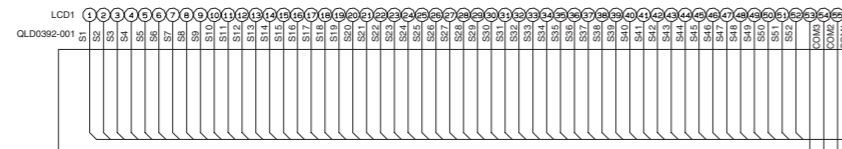
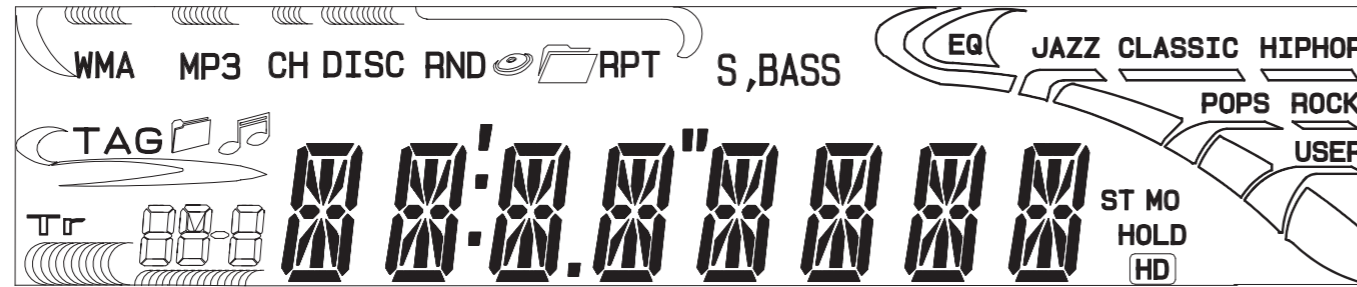
TO SHEET 1

MAIN P.W.B. GEB10164A

■ LCD & Key control section

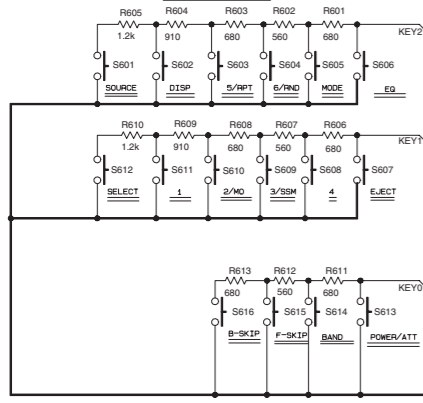
SW PWB : GEB10174A

LCD DISPLAY

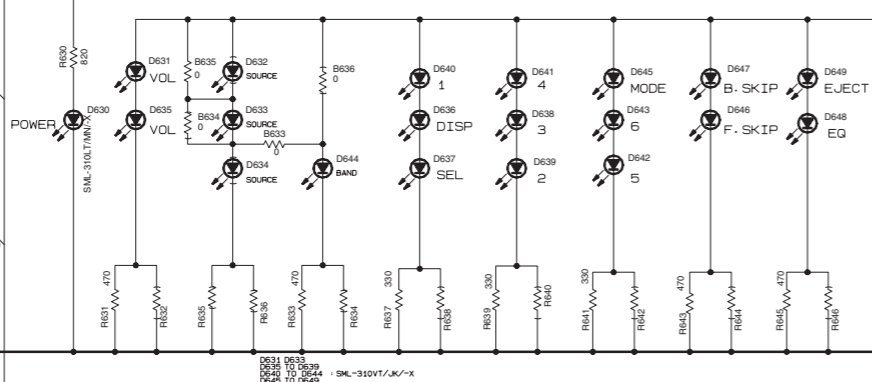


TO CN801 (SHEET 1)

KEY MATRIX

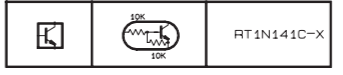
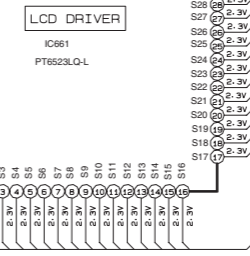
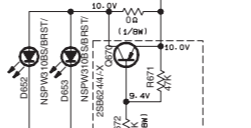


LIGHTING DISPLAY



S601-S618: NSW0124-001X

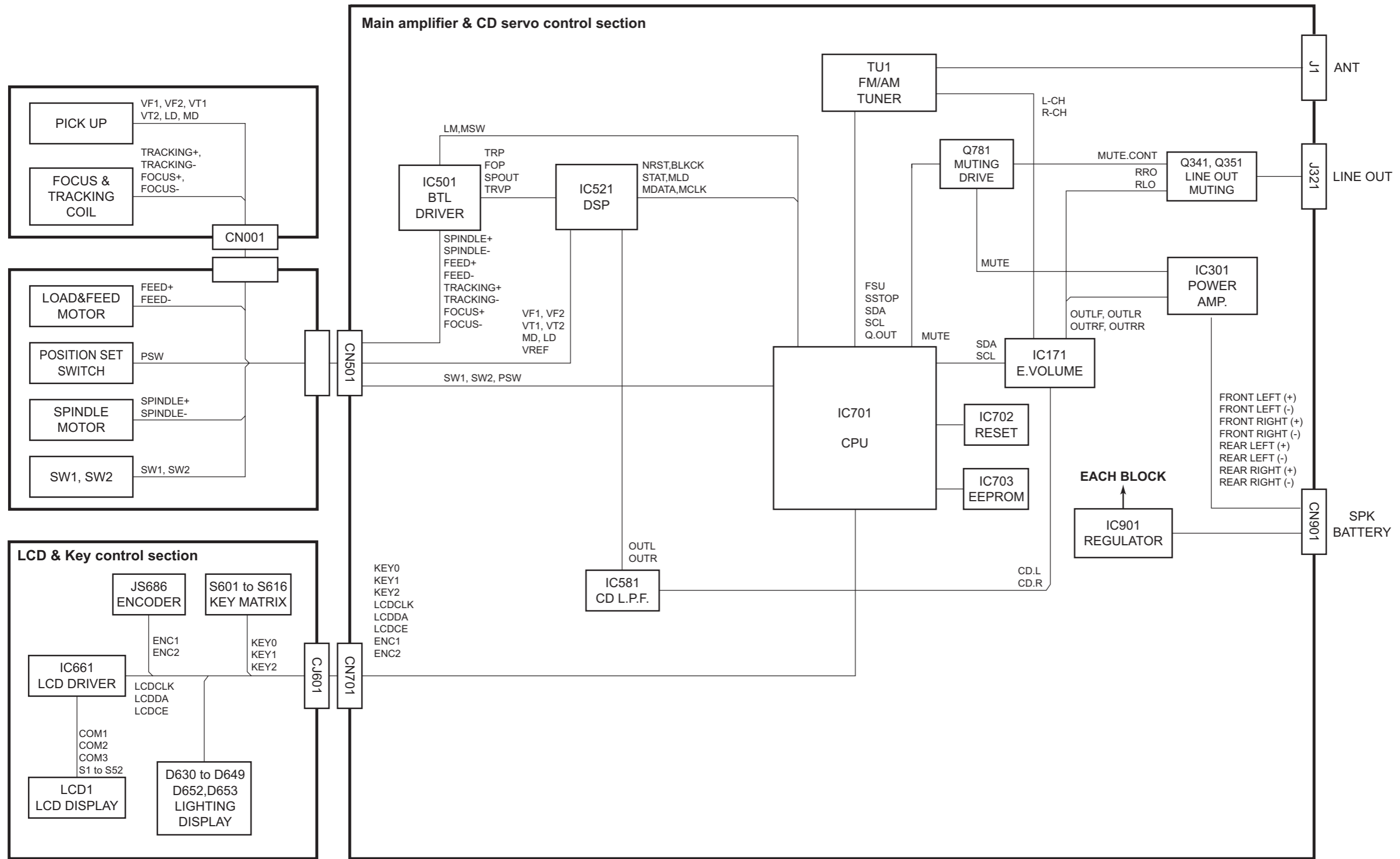
D631-D639: SML-310V1/J/-X



NOTES

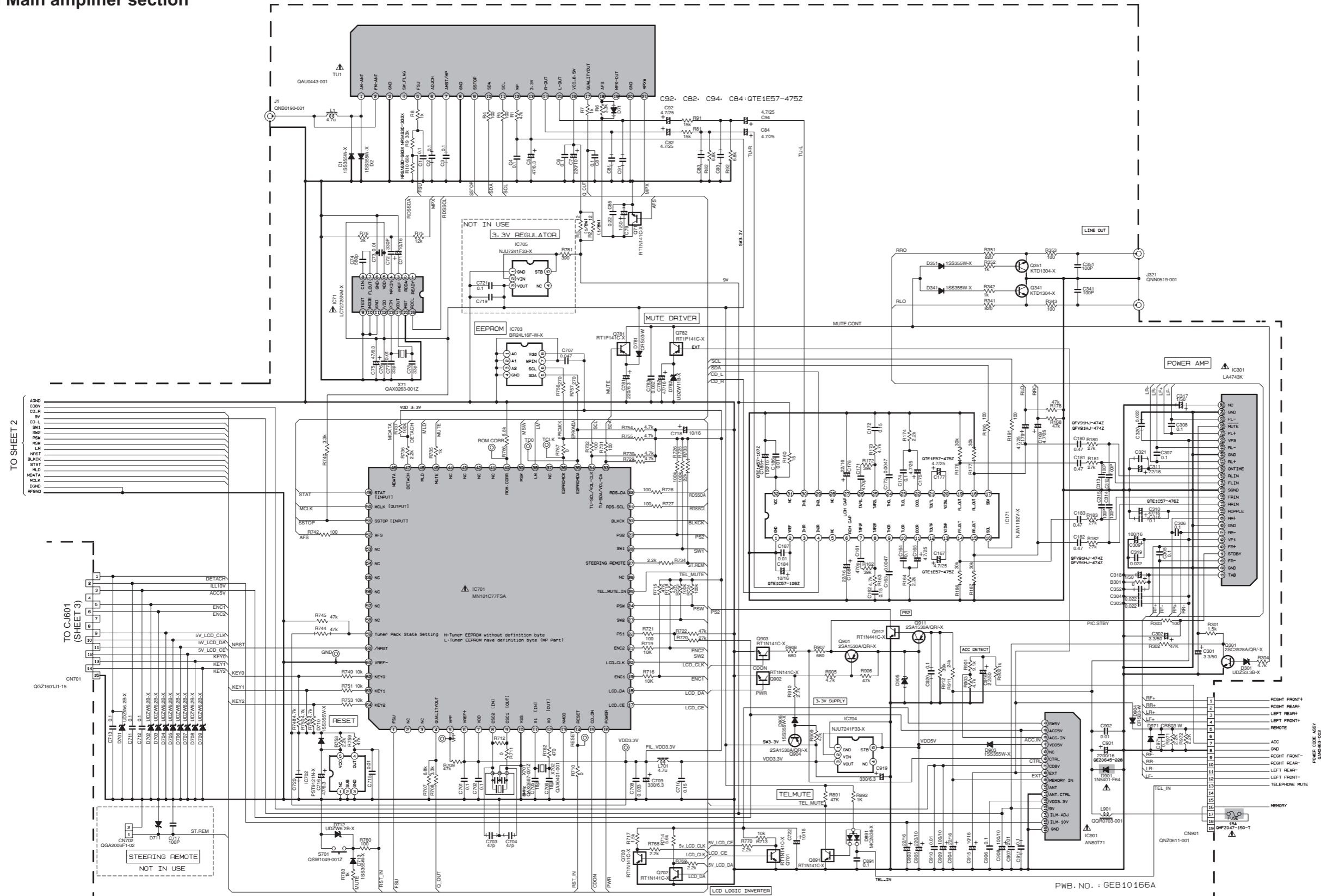
- VOLTAGES ARE DC-MEASURED WITH A DIGITAL VOLT METER WITHOUT INPUT SIGNAL.
- UNLESS OTHERWISE SPECIFIED. ALL RESISTORS ARE 1/16W ±5% METAL GLAZE RESISTOR. ALL CAPACITORS ARE 50V OR 25V CERAMIC CAPACITOR. ALL RESISTANCE VALUES ARE IN OHM. ALL CAPACITANCE VALUES ARE IN uF (P=PF) ALL E. CAPACITORS ARE SHOWN IN THE FORM OF CAPACITANCE(uF)/RATED VOLTAGE(V) T --- TANTALUM CAPACITOR.
- COMPONENTS IN () INDICATE NOT USE.

Block diagram (For KD-G161 and KD-G162)



Standard schematic diagrams (For KD-G161 and KD-G162)

■ Main amplifier section

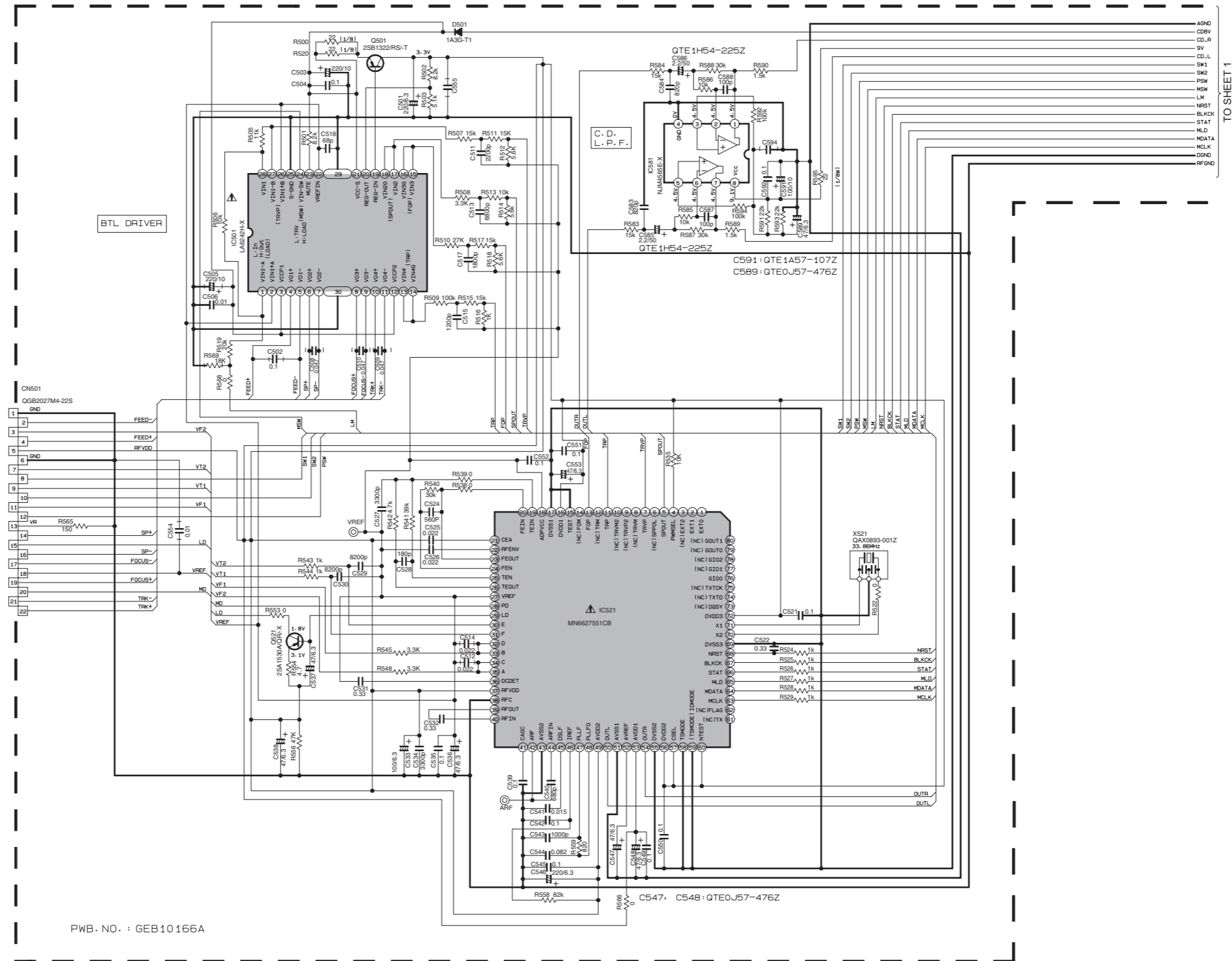
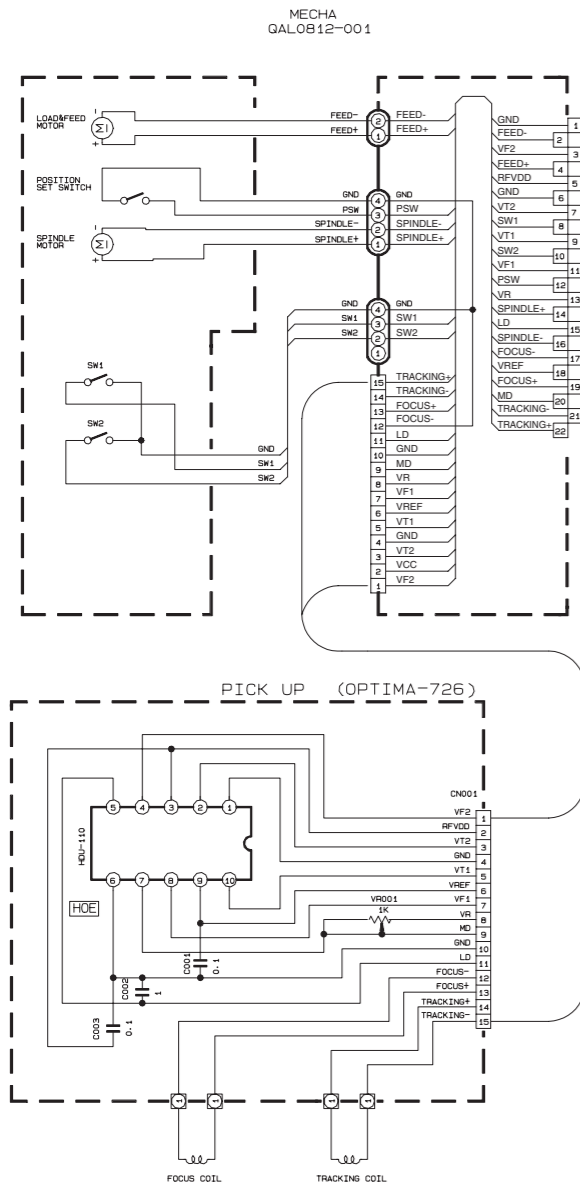


- NOTES:
- VOLTAGE ARE DC-MEASURED WITH A DIGITAL VOLTMETER WITHOUT INPUT SIGNAL CONDITION
 →FM()M MODE, () CD MODE
 - UNLESS OTHERWISE SPECIFIED:
 ALL RESISTOR ARE 1/16W ±5%METAL GLAZE RESISTOR.
 ALL CAPACITOR ARE 50V OR 25V CERAMIC CAPACITOR.
 ALL RESISTANCE VALUES ARE IN OHM.
 ALL CAPACITANCE VALUES ARE IN nF(μF+PF).
 ALL INDUCTANCE VALUES ARE IN μH.
 ALL E-CAPACITORS ARE SHOWN IN THE FORM OF CAPACITANCE(μF)/RATED VOLTAGE(V)

	47k	RT1N441C-X
	47k	RT1N441C-X
	10k	RT1N441C-X
	10k	RT1P141C-X

▲ Parts are safety assurance parts.
 When replacing those parts make sure to use the specified one.

CD servo control section

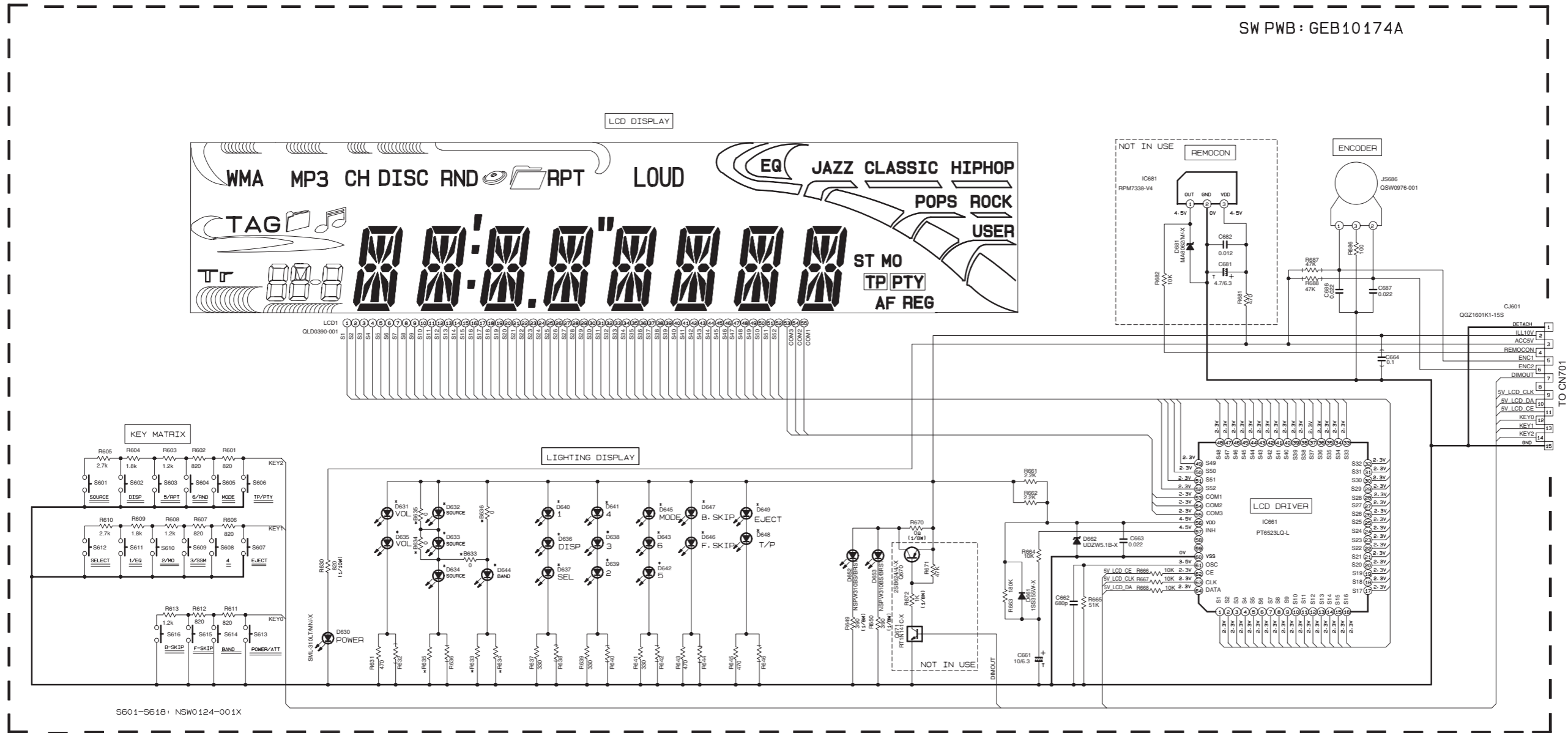


- NOTES
1. VOLTAGES ARE DC-MEASURED WITH A DIGITAL VOLT METER WITHOUT INPUT SIGNAL.
 2. UNLESS OTHERWISE SPECIFIED.
ALL RESISTORS ARE 1/16W ±5% METAL GLAZE RESISTOR.
ALL CAPACITORS ARE 50V OR 25V CERAMIC CAPACITOR.
ALL RESISTANCE VALUES ARE IN OHM.
ALL CAPACITANCE VALUES ARE IN UF(P=PF)
ALL E-CAPACITORS ARE SHOWN IN THE FORM OF CAPACITANCE(UF)/RATED VOLTAGE(V)
T --- TANTALUM CAPACITOR.
 3. COMPONENTS IN () INDICATE NOT USE.

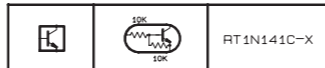
Parts are safety assurance parts.
When replacing those parts make sure to use the specified one.

TO SHEET 1

■ LCD & Key control section



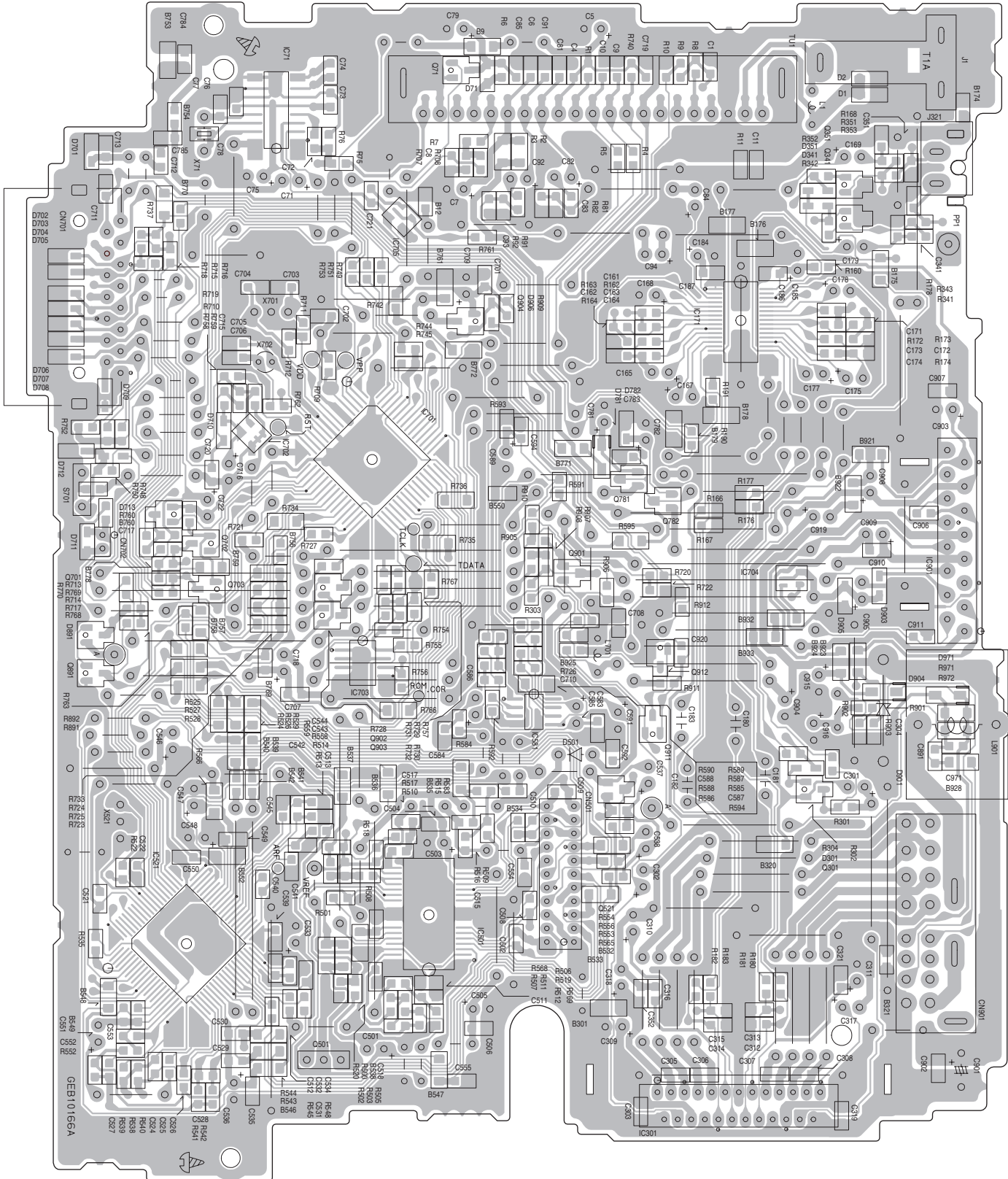
REF. NAME	KD-G161E	KD-G162E
D632	LNJ308GB1/1-3/X	NO USE
D633	NO USE	SML-310LT/MN/-X
D634	LNJ308GB1/1-3/X	NO USE
D631, D635 D636 - D649	LNJ308GB1/1-3/X	SML310VT/JK/-X
B633, B635	NO USE	USE
B634, B636	USE	NO USE
R633	1.2K	470
R634	1.5K	NO USE
R635	560	NO USE



- NOTES
- VOLTAGES ARE DC-MEASURED WITH A DIGITAL VOLT METER WITHOUT INPUT SIGNAL.
 - UNLESS OTHERWISE SPECIFIED.
ALL RESISTORS ARE 1/16W ±5% METAL GLAZE RESISTOR.
ALL CAPACITORS ARE 50V OR 25V CERAMIC CAPACITOR.
ALL RESISTANCE VALUES ARE IN OHM.
ALL CAPACITANCE VALUES ARE IN UF(P=PF)
ALL E-CAPACITORS ARE SHOWN IN THE FORM OF CAPACITANCE(UF)/RATED VOLTAGE(V)
T --- TANTALUM CAPACITOR.
 - COMPONENTS IN () INDICATE NOT USE.

■ Main board (For KD-G161 and KD-G162)

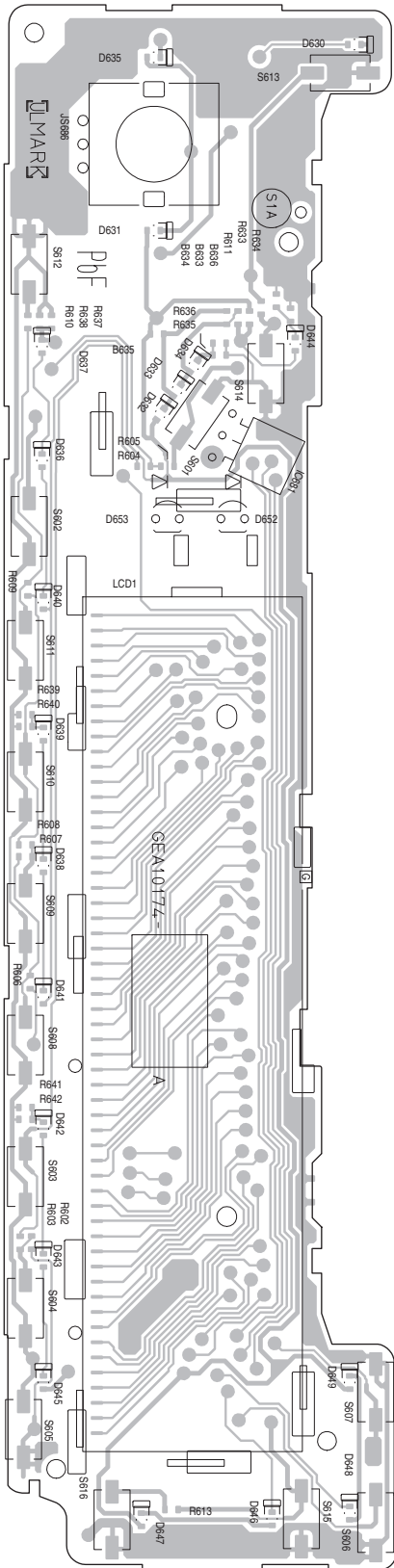
Lead free solder used in the board (material : Sn-Ag-Cu, melting point : 219 Centigrade)



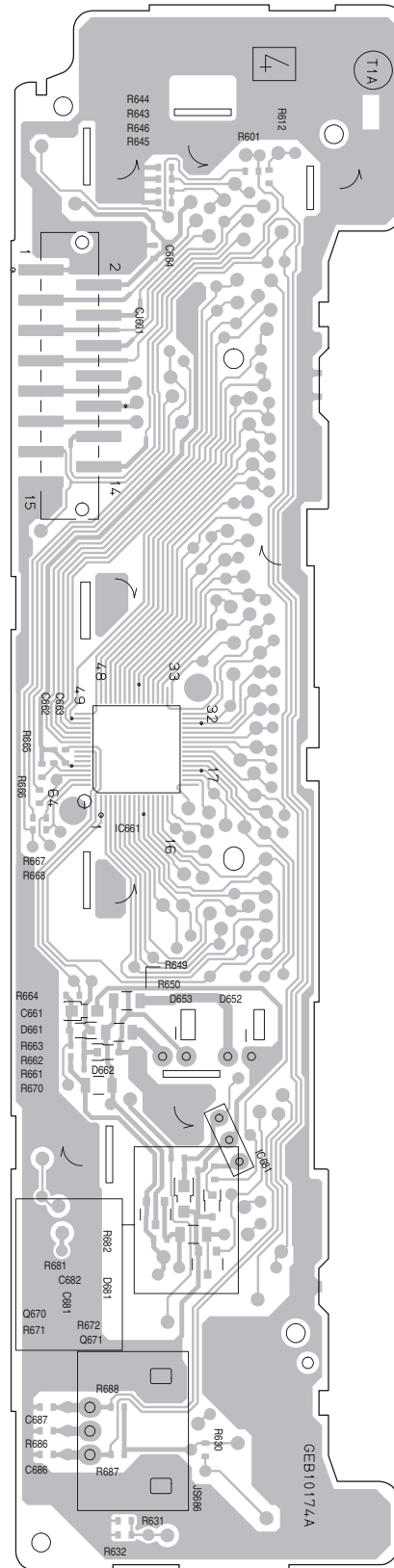
■ Switch board

Lead free solder used in the board (material : Sn-Ag-Cu, melting point : 219 Centigrade)

Forward side



Reverse side



JVC

Victor Company of Japan, Limited

Mobile Entertainment Business Group Mobile Entertainment Category 10-1,1chome,Ohwatari-machi,Maebashi-city,371-8543,Japan

(No.MA233SCH)



Printed in Japan
VPT